

## ABOUT RODBUSTERS, INC.

Established in 1993, Rodbusters, Inc., is a union rebar installation contractor serving organizations and public entities throughout New York City and the tri-state area. The firm has successfully completed a wide range of concrete reinforcement projects, including New York City DEP and DOT projects, bridges, parking garages, foundations, superstructures, post-tensioning and structural slabs.



**RODBUSTERS** INC.

Rebar Fabrication & Installation

36 Broadmoor Lane • Westbury, N.Y. 11590

P: 516.333.7604

[www.rodbustersny.com](http://www.rodbustersny.com)



# BUILD ON OUR STRENGTH



## CERTIFICATIONS

- *New York State Minority/Women's Business Enterprise*
- *New York City Minority/Women's Business Enterprise*
- *New York School Construction Authority Minority/Women's Business Enterprise*
- *WBE and SBE by the Port Authority of New York and New Jersey*



## COMMITTED TO QUALITY

Rodbusters, Inc. offers in-house, just-in-time rebar fabrication capabilities. Our core strength lies in our ability to integrate rebar installation into your project's critical path precisely on schedule to ensure the most timely process and eliminate unnecessary delays.

We also strictly adhere to project specifications, tolerances and applicable ACI Codes. All rebar is field-installed under the guidelines of the CRSI Manual of Standard Practice and the CRSI Field Placing Manual.

## THE HIGHEST SAFETY STANDARDS

At Rodbusters, we recognize the critical role we play as your partner in creating safe structures. That's why every member of our team is trained to adhere to OSHA standards. To ensure a safe work environment, Rodbusters also mandates that field employees utilize OSHA-required personal protective equipment.

## FIELD OPERATIONS

Rodbusters' workforce is highly skilled, mobile and flexible. Our field forces can be deployed and redeployed on short notice, as field conditions necessitate. Every project is supported by state-of-the-art equipment to ensure safety and superior quality.

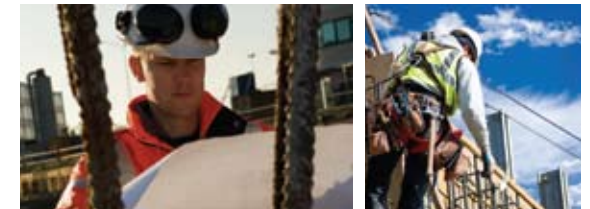
---

**FOUNDATIONS | SLABS**  
**SIDEWALKS | SLURRY WALLS**  
**ROADWORK | BRIDGES | HI-RISES**  
**HEAVY CONSTRUCTION**

---

## PROJECT MANAGEMENT

Our team includes skilled project managers and administrative support staff who work diligently to oversee your project start to finish. From coordinating the detailing, fabrication, deliveries and installation to making frequent on-site inspections, our project managers and administrative personnel ensure that work is completed on schedule, within budget, and that all requirements have been met.



# RODBUSTERS